

UL 762 Listed for Restaurant Exhaust Appliances



COOK products with a UL 762 listing are designed to eject contaminated or grease-laden air. These products are UL listed to operate continuously at elevated temperatures and continue operation during grease flare-up. All of these units are intended for installation in accordance with the National Fire Protection Association (NFPA) Standard 96: Standard for Ventilation Control and Fire Protection of Commercial Cooking Operations.

UL Listed to Operate Continuously to 300°F

- VCR / VCR-HP / VCR-XP VCRD / VCRD-HP / VCRD-XP
- Lo-Pro (requires upblast diverters)
- CPV / CPA / CPA-A
- QMX / QMX-HP / QMXU / QMXU-HP / QMXLE / QMXLE-HP
- CIC

CPV, CPA, CPA-A, QMX, QMX-HP and CIC must be ordered with drain and access door to comply with UL requirements. Weather covers are required for outdoor applications. When airstream temperatures are expected to exceed 180°F, high temperature accessories may be required.



VCR / VCR-HP / VCR-XP / VCRD / VCRD-HP / VCRD-XP



Lo-Pro
Shown with upblast diverters



QMXLE / QMXLE-HP



QMX / QMX-HP



CIC



QMXU / QMXU-HP

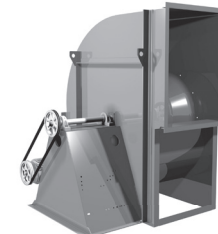
UL Listed to Operate Continuously to 500°F

- CPS / CPS-A
- CA / CA-SWSI Arrangement 1, 9 and 10
- CA-4 / CA-4 SWSI Arrangement 1 and 2
- CF / CF Arrangement 1, 9 and 10
- CF-4 / CF-4 Arrangement 1 and 2
- QMX / QMX-HP Arrangement 9
- CIC

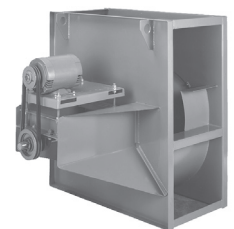
These COOK products must be ordered with drain and access door to comply with UL requirements. Weather covers are required for outdoor applications. When airstream temperatures are expected to exceed 180°F, high temperature accessories may be required.



CPS / CPA / CPS-A / CPA-A
Shown with weather cover



CA / CF



CA-4 / CF-4

Two Grease Collection Options

The Grease Terminator 2 is a grease-capture and containment system. It uses the same material that oil companies use to clean catastrophic oil spills on the ocean. It lasts about 30 to 45 days and is then replaced.



The grease trough is constructed of continuously welded .064 aluminum and includes a pan, lid and mounting hardware. Both the curb and non-curb mounted versions feature a baffled design for extended capacity. The lid and pan are removable for easy cleaning.



Curb Mounted Version



Non-Curb Mounted
'Hanging' Version



VCR shown with
Grease Terminator 2