

COOK

CBF

Cinder Block Fan

INSTALLATION, OPERATION, AND MAINTENANCE MANUAL

This publication contains the installation, operation and maintenance procedures for standard units of the **CBF - Cinder Block Fan**. Carefully read this publication prior to installation.

Loren Cook catalog, *CBF*, provides additional information describing the equipment, fan performance, available accessories and specification data.

For additional safety information, refer to AMCA publication 410-96, *Safety Practices for Users and Installers of Industrial and Commercial Fans*.

All of the publications listed above can be obtained from Loren Cook Company by phoning (417) 869-6474, extension 166; by FAX at (417) 832-9431; or by e-mail at info@lorencook.com.

For information and instructions on special equipment, contact Loren Cook Company at (417) 869-6474.

Receiving and Inspection

Carefully inspect the fan and accessories for any damage and shortage immediately upon receipt of the fan.

- Turn the wheel by hand to ensure it turns freely and does not bind.
- Remove shipping tape.
- Record on the *Delivery Receipt* any visible sign of damage.

Handling

Lift fan by the outside housing (box). Never lift by the shaft or motor.

Storage

If the fan is stored for any length of time prior to installation, store it in its original shipping crate and protect it from dust, debris and the weather.

WARNING

This unit has rotating parts. Safety precautions should be exercised at all times during installation, operation, and maintenance. **ALWAYS** disconnect power prior to working on fan.

Installation

CBF units are intended to replace an 8"x16" standard cinder block in a block wall. Slide unit into open block location, as desired, and screw into place using pre-punched holes in the front flange. After unit is installed and wired, attach grille using the two screws provided.

Wiring Installation

All wiring should be in accordance with local ordinances and the National Electrical Code, NFPA 70. Ensure the power supply (voltage, frequency, and current carrying capacity of wires) is in accordance with the motor nameplate.

Lock off all power sources before unit is wired to power source.

Personal Safety

Disconnect switches are recommended. Place the disconnect switch near the fan in order that the power can be swiftly cut off in case of an emergency, and in order that maintenance personnel are provided complete control of the power source.

Follow the wiring diagram in the disconnect switch and the wiring diagram provided with the motor. Correctly label the circuit on the main power box and always identify a closed switch to promote safety (i.e., red tape over a closed switch).

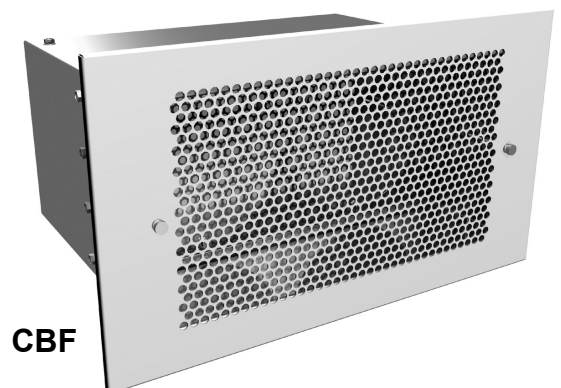
Final Installation Steps

- Inspect fasteners and setscrews, particularly fan mounting fasteners, and tighten.
- Inspect for correct amperage and voltage with an ammeter and voltmeter.
- Ensure all accessories are installed.
- Make sure wheel does not rub against the inlet.

Operation

Pre-Start Checks

- Lock out all the primary and secondary power sources.
- Inspect fasteners and setscrews, particularly those used for mounting the fan, and tighten if necessary.
- Inspect motor wiring.
- Ensure fan and ductwork are clean and free of debris.
- Restore power to unit.



Inspection

Inspection of the fan should be conducted at the first **30 minute** interval of satisfactory operation. During the inspection, stop the fan and inspect as per directions below.

30 Minute Interval

Inspect bolts, setscrews, and motor mounting bolts. Adjust and tighten as necessary.

Grille Installation

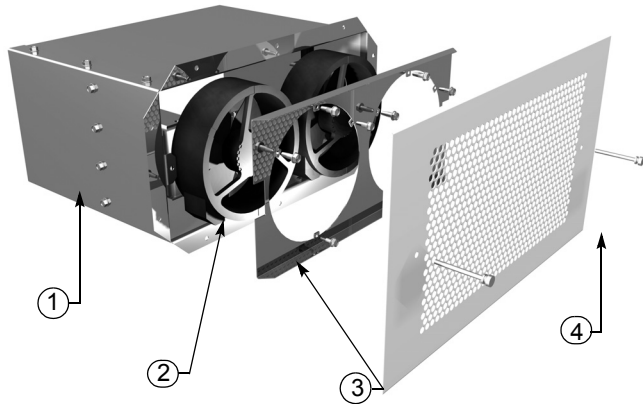
Attach the grille by hand-tightening the knurled screws. When the unit is furnished with a filter, place the knurled screws through the hole in the grille. Install the filter through the holes provided in the filter frame.

Maintenance

Establish a schedule for inspecting all parts of the fan. The frequency of inspection depends on the operating conditions and location of the fan.

- 1) Turn off all power going to Cinder Block Fan.
- 2) Remove (2) grille screws with Phillips Head screwdriver.
- 3) Unfasten (4) blower panel screws from support angles.
- 4) Pull blower assembly out approximately 12 inches.
- 5) Reach inside housing and unplug receptacle from junction box.

CBF Parts List



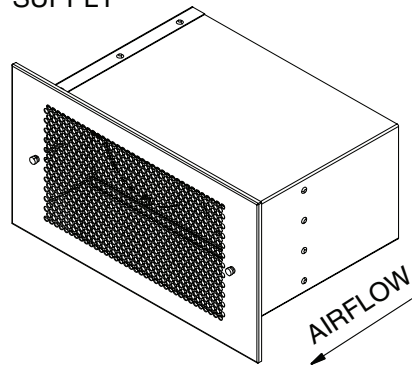
Parts No.	CBF
1	Housing
2	Blower Assembly
3	Blower Mounting Plate
4	Grille

Limited Warranty

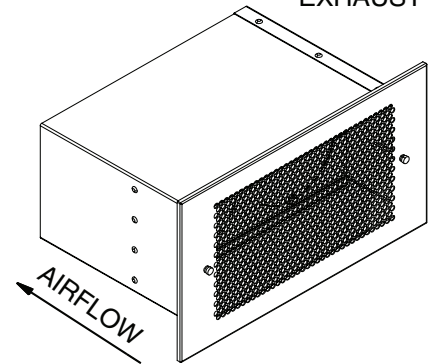
Loren Cook Company warrants that your Loren Cook fan was manufactured free of defects in materials and workmanship, to the extent stated herein. For a period of one (1) year after date of shipment, we will replace any parts found to be defective without charge, except for shipping costs which will be paid by you. This warranty is granted only to the original purchaser placing the fan in service. This warranty is void if the fan or any part thereof has been altered or modified from its original design or has been abused, misused, damaged or is in worn condition or if the fan has been used other than for the uses described in the company manual. This warranty does not cover defects resulting from normal wear and tear. To make a warranty claim, notify Loren Cook Company, General Offices, 2015 East Dale Street, Springfield, Missouri 65803-4637, explaining in writing, in detail, your complaint and referring to the specific model and serial numbers of your fan. Upon receipt by Loren Cook Company of your written complaint, you will be notified, within thirty (30) days of our receipt of your complaint, in writing, as to the manner in which your claim will be handled. If you are entitled to warranty relief, a warranty adjustment will be completed within sixty (60) business days of the receipt of your written complaint by Loren Cook Company. This warranty gives only the original purchaser placing the fan in service specifically the right. You may have other legal rights which vary from state to state.

Air Flow Configurations:

SUPPLY



EXHAUST



LOREN COOK COMPANY

Corporate Offices: 2015 E. Dale Street Springfield, MO 65803 417.869.6474
lorencook.com